



ARCHITECT:
P.R.S. Sivakumar, B.ARCH., F.I.I.A., F.I.V.
MADURAI.



Kanna thal Residency

BUILDING BEAUTIFUL LIFE STYLES

GROUND FLOOR PLAN

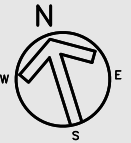


PROJECT HIGHLIGHTS

- ▶ No Violation
- ▶ Vasthu Compliant
- ▶ Individual Walls
- ▶ Enclosed, Safe Children's Play Area
[Open To Sky Central Courtyard]
- ▶ Covered Car Parking
- ▶ Two Elevators
[One 15 passenger lift also to accommodate wheel chair and stretcher, one 6 Passenger lift]
- ▶ Mini Gymnasium
- ▶ Sewage Treatment Plant
- ▶ Fire Fighting System
- ▶ Intercom Facility
- ▶ Rain Water Harvesting
- ▶ Backup Power for Common Lighting and Lift
- ▶ Sanitation Facilities to Drivers and Servants

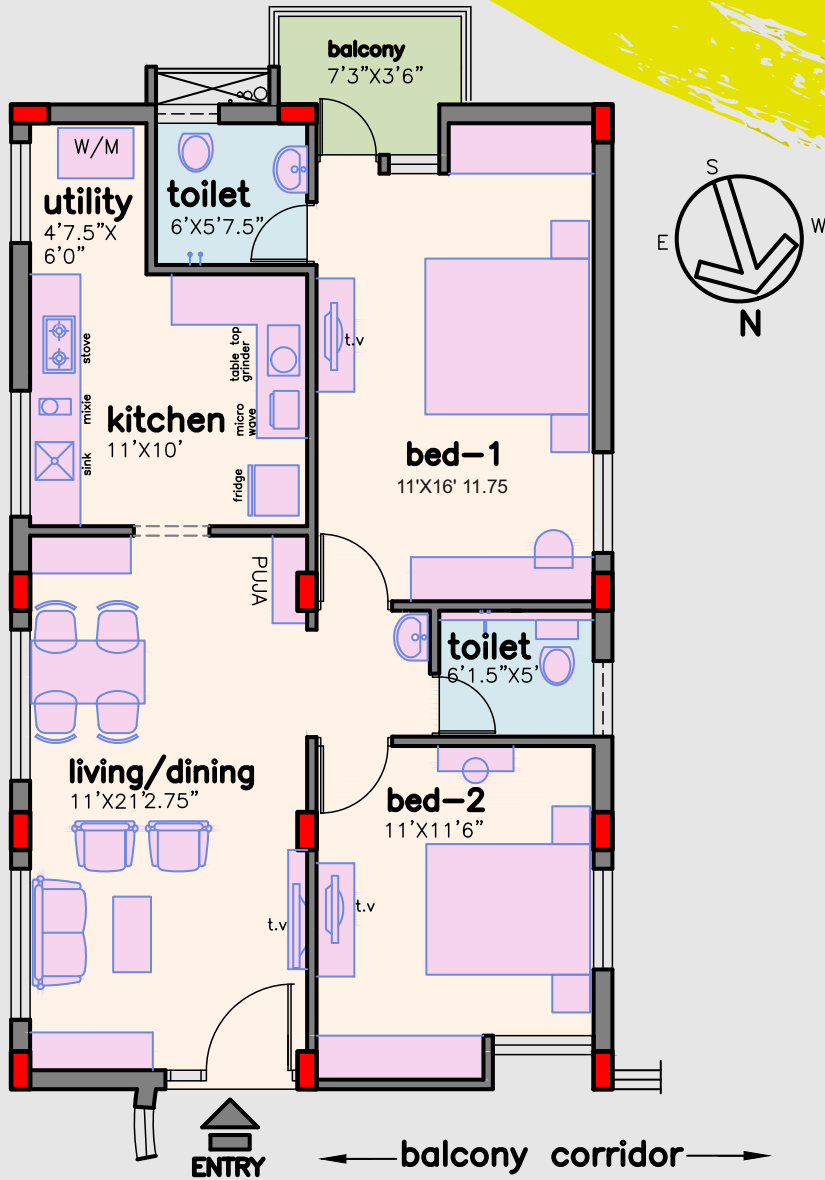
*Gymnasium and association room will be suitably relocated at final stages

TYPICAL FLOOR PLAN

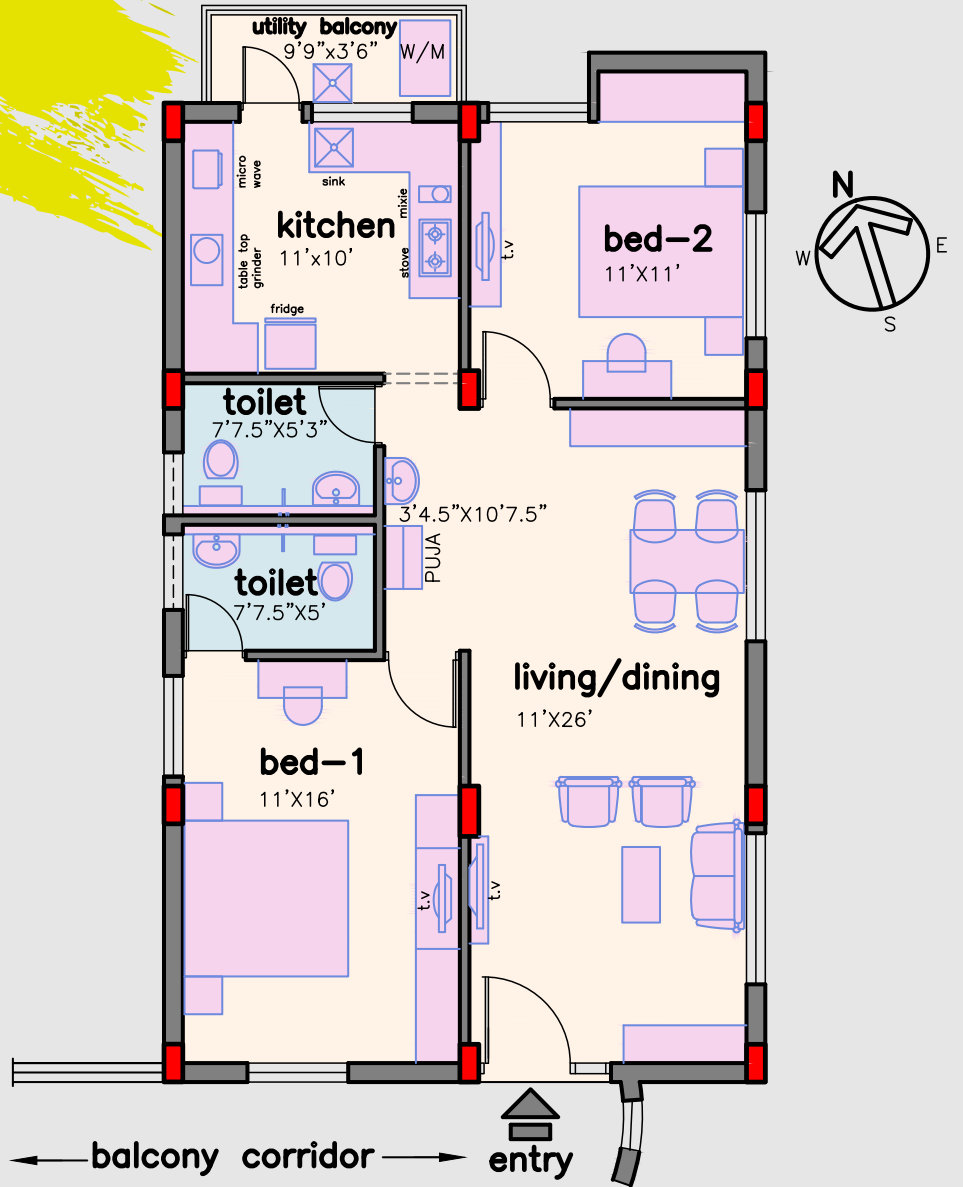


Type	Built-Up Area	Super Built-up Area
A	959 Sqft	1151 Sqft
B	944 Sqft	1133 Sqft
C	935 Sqft	1122 Sqft
D	1261 Sqft	1514 Sqft
E	1378 Sqft	1654 Sqft
F	964 Sqft	1157 Sqft
G	957 Sqft	1149 Sqft
H	983 Sqft	1180 Sqft

2 BHK FLATS

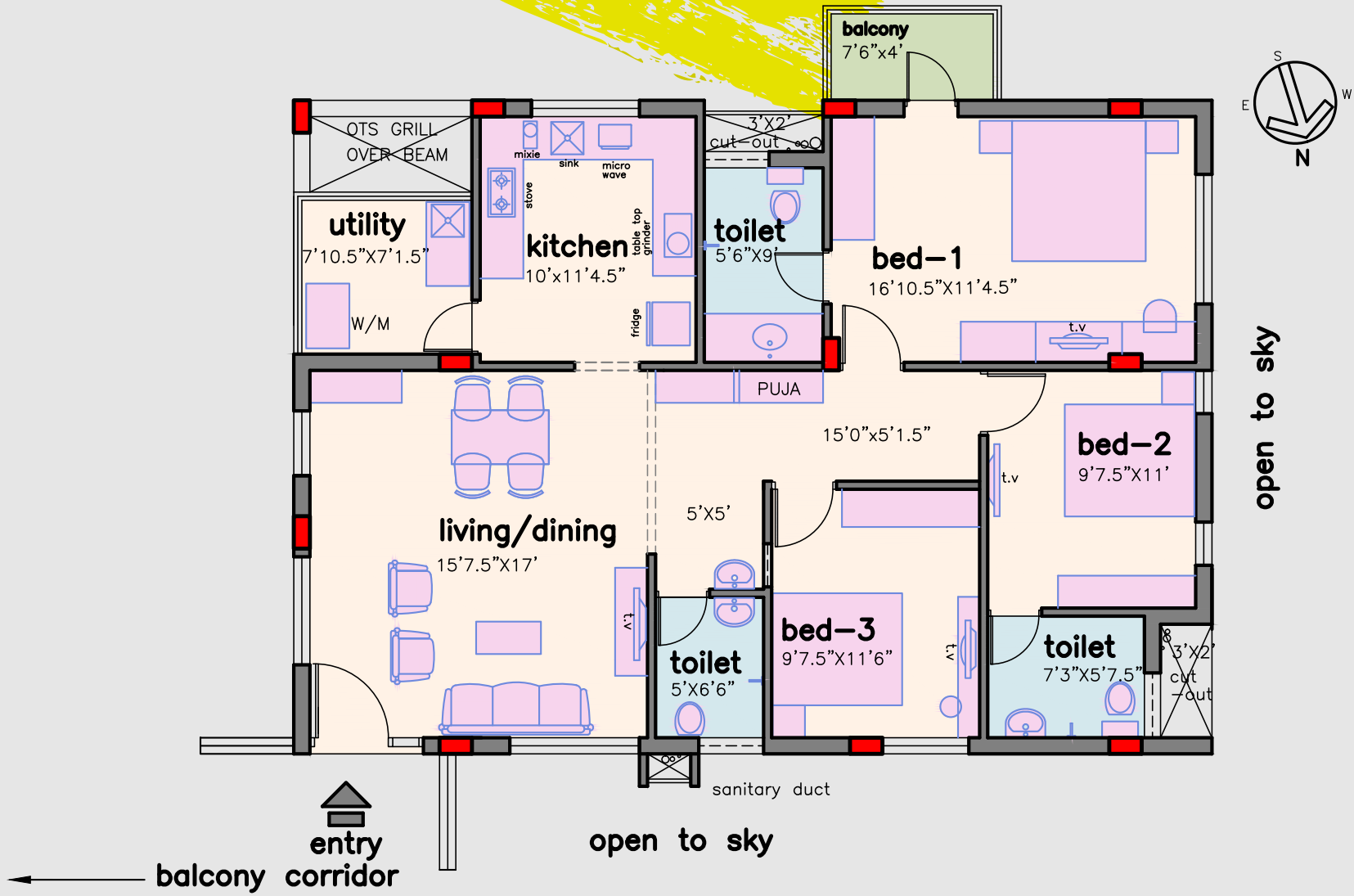


TYPE - A	
Built-up Area 959 Sqft	Super Built-up Area 1151 Sqft



TYPE - H	
Built-up Area 983 Sqft	Super Built-up Area 1180 Sqft

3 BHK FLAT



TYPE - D

Built-up Area
1261 Sqft

Super Built-up Area
1514 Sqft

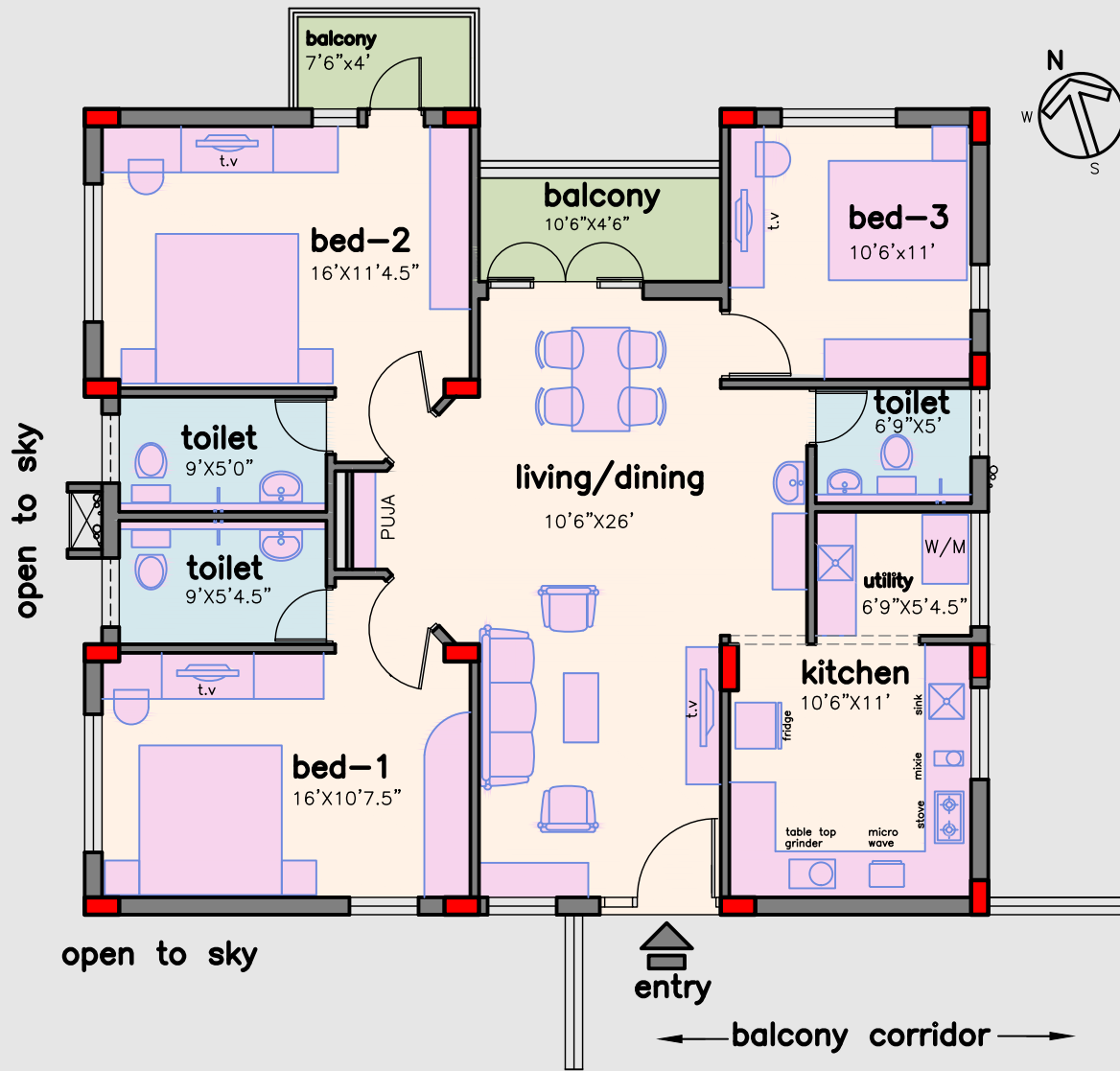
2 BHK FLATS



TYPE - B	
Built-up Area 944 Sqft	Super Built-up Area 1133 Sqft

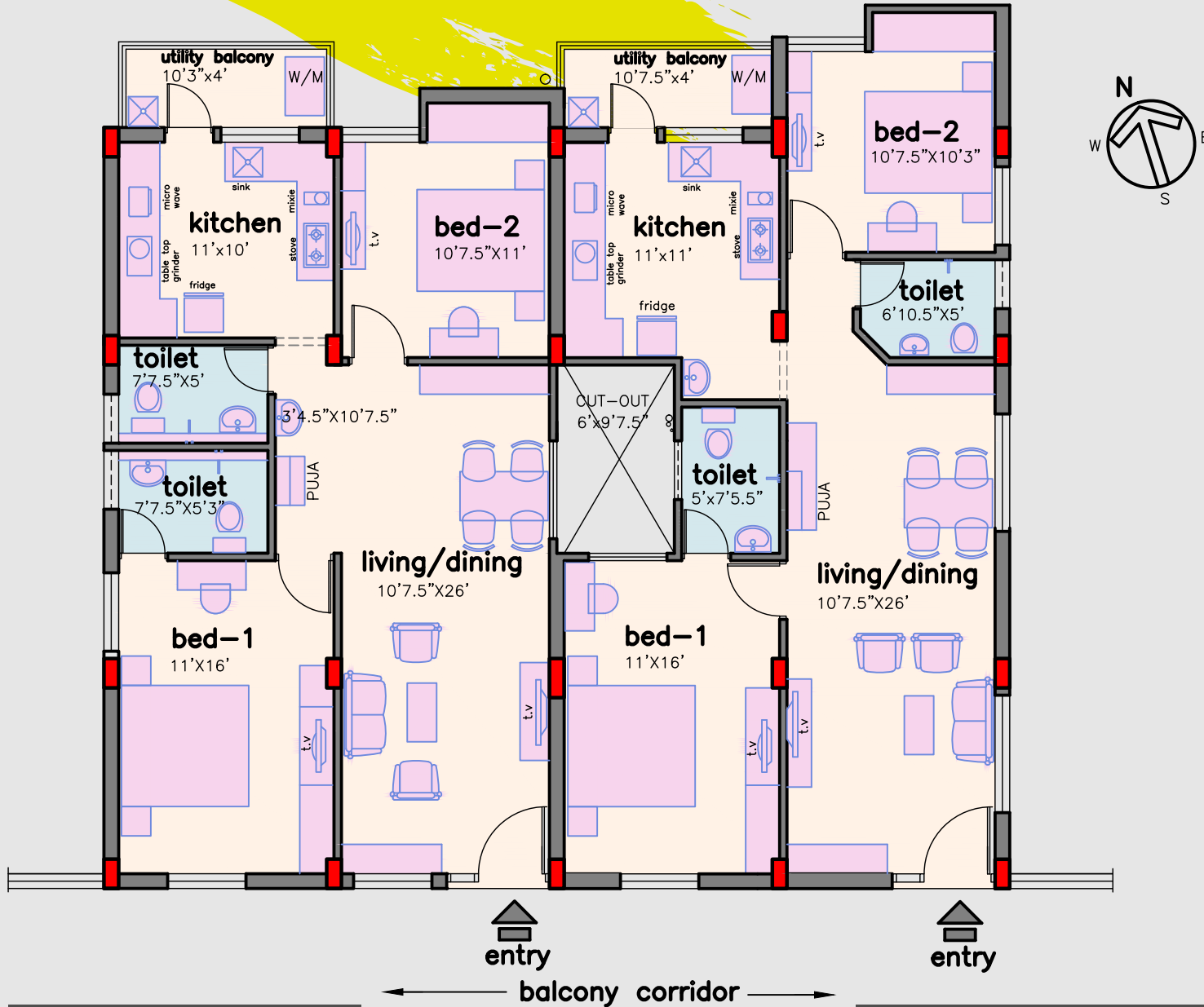
TYPE - C	
Built-up Area 935 Sqft	Super Built-up Area 1122 Sqft

3 BHK FLAT



TYPE - E	
Built-up Area	Super Built-up Area
1378 Sqft	1654 Sqft

2 BHK FLATS



TYPE - F	
Built-up Area 964 Sqft	Super Built-up Area 1157 Sqft

TYPE - G	
Built-up Area 957 Sqft	Super Built-up Area 1149 Sqft

SPECIFICATIONS

Structure

- RCC framed structure using branded steel and cement and walls with chamber bricks

Doors & Windows

- Main door – Teak Wood Frame with Teak Wood Door
- Internal doors – Vengai Wood Frames with Flush Doors
- Windows – Powder coated UPVC Sliding Shutters
- Grills – Mild Steel (MS)
- Good quality hardware

Flooring

- Living, Dining, Balcony & Kitchen – Vitrified tile (2' x 2') - Somany or equivalent
- Balcony & Utility - Anti-skid ceramic tiles (1' x 1') - Somany or equivalent
- Bathroom
 - Anti-skid ceramic tiles (1' x 1') for floor –Somany or equivalent
 - Glazed tiles for dado - Somany or equivalent

Painting

- Internal ceiling – Putty with 2 coats of Emulsion Paint over one coat of Primer
- Internal walls - Putty with 2 coats of Emulsion Paint over one coat of Primer
- Common area walls & ceiling – Distemper
- External – Weather proof exterior emulsion paint of Asian / equivalent brand
- Wood work – Putty with 2 coats of enamel paint over one coat of Primer

Electrical

- Concealed wiring of Finolex / equivalent make
- Modular Switches
- Telephone points in living room
- Adequate light, fan, and power points
- Provision for inverter point
- Provision for AC and TV in all bedrooms, water heater in all bathrooms
- Three phase connection and individual meters provided for all flats

Plumbing & Sanitary

- Water lines with CPVC pipe of Astral or Ashirvad make
- Provision for RO
- Sanitary fixtures - Parryware / equivalent
- PVC rain water, sanitary, waste and water line in open ducts of Supreme / Finolex or equivalent

Counter Top

- 20 mm black granite in kitchen counter with 2 feet tile above
- Stainless steel sink

External

- Paver Blocks in car parking and peripheral areas
- Compound Wall in outer periphery with Gates
- Landscaping as per Architect's design

Staircase Railing

- M.S Railing coated with suitable color paint as per architect design

Lifts

- One 15 passenger lift of Johnson make also to accommodate wheel chair and stretcher
- One 6 passenger capacity lift of Johnson make

Security And Safety

- Fire alarms & Fire hoses in all floors
- Intercom

BEHIND THE NAME

Kannathal is the name of a very powerful deity worshipped among Nagarathars.
The world famous Kannathal temple is located at Nattarasankottai town in Sivaganga district, Tamil Nadu.

ABOUT US

We believe in ethics and commitment.

ETHICS - We are people of high integrity - committed in this for life time.

COMMITMENT - We are totally engaged in what we do because we believe in the goodness of our work

PEOPLE

M. Vallappan, B.Com
Proprietor

Leading real estate promoter in Madurai
North since 90's and highly experienced in land
development and promotion.

M. Elamaran
Project Lead

Into real estate since early 2000's and has strong
expertise in Construction Industry

S. Saravan Kumar, M. Tech, MBA

Bachelor's in Electrical & Electronics and
Masters in Construction Management from *IIT Madras*.
Worked with *L&T Chennai* for 6 years.

V. Arun, B.E (Hons), MBA

Bachelor's in Computer Science from *BITS Pilani* &
MBA in Strategy from *Schulich*, Canada. Worked with *Wells Fargo*
and *Roots Canada* as Software Analyst for 3 years.



OUR ASSOCIATES

Architect	P.R.S. Sivakumar, B.Arch., F.I.I.A., F.I.V., <i>Awardee of 'Honourable Architect Award 2013' by Indian Institute of Architects, Tamil Nadu Chapter M/s Mani Ram Design Den [Madurai]</i>
Structural Engineer	T.S. Janarthanan, B.E., M.E., FACCE (I) <i>M/s Arwin In'fra - Den [Madurai]</i>
Electrical Consultant	K. Premkumar, B.E., M.Tech., MISTE., A.I.V., <i>M/s Black & White Consultancy [Coimbatore]</i>
Plumbing Consultant	P. Krishna Moorthi, PHE, <i>M/s Vinayak Concerns [Coimbatore]</i>

CONTACT

Site Address :

KANNATHAL RESIDENCY
E.B Colony Main Road,
Iyer Bungalow,
Madurai – 625 017, TN, India.

M. Elamaran : +91 98425 34028
S. Saravan : +91 99403 56057
V. Arun : +91 99433 86268

Office Address :

ARV PROMOTERS
Plot No.7A, Door No. 3/770,
Alagarkoil Main Road,
Surveyor Colony, K.Pudur (Post),
Madurai - 625 007, TN, India.

E info@arvpromoters.in

W www.arvpromoters.in

Note : The developer reserves the right to amend the designs and specifications without prior notice. Furniture layout including cupboards are shown for convenience of buyers and the same are not included in the cost.